

---

## BEGINNING GUITAR CLASS

---

August 5, 2020

Welcome everyone. My name is Rick Mollindo, I'll be your instructor. Playing guitar is a talent you will appreciate for the rest of your life no matter how far you progress with your practice. I hope you enjoy the class!

Here is my contact information if you have any questions beyond the Zoom meetings.

Email: [rick@rickmollindopublishing.com](mailto:rick@rickmollindopublishing.com)

Phone: 760-565-8396 Please leave a message.

Class items needed or recommended.

1. (Need) A Guitar, any type will do. (I can supply a new nylon string guitar for purchase.)
2. (Need) A pick for later on; maybe week 3.
3. (Recommended) A music stand to hold your music.
4. (Recommended) A guitar tuner or tuning app for your phone or computer.

Below are some online tuning apps that are free and don't need a download. Click the links to go to their websites. Most of these require you to allow your microphone to be accessed. You can also find downloadable tuning apps from Google Play store or other websites.

<https://guitar-tuner.app/>

<https://tuner-online.com/>

<https://www.ultimate-guitar.com/tools/tuner>

<https://www.fender.com/online-guitar-tuner/acoustic-guitar-tuning/>

The other pages contain our first 3-weeks of instruction.

We will learn about string names, parts of the guitar, how to read Tablature (a type of music notation for guitar), finger labels, and some easy songs.

Thank you for your interest and willingness to try it out!

Sincerely,  
Rick

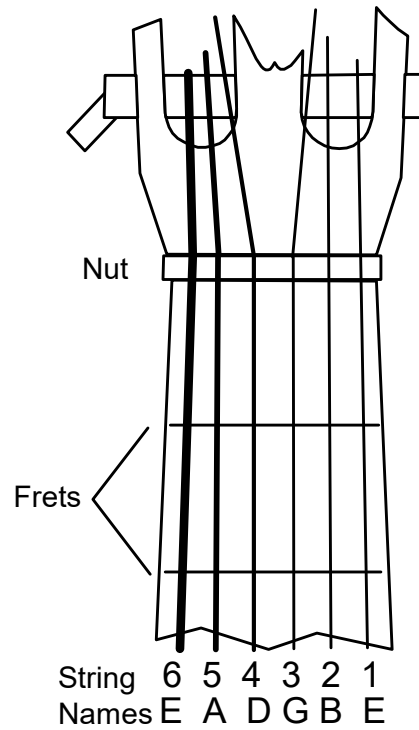
## Parts of the guitar

### Remember these parts:

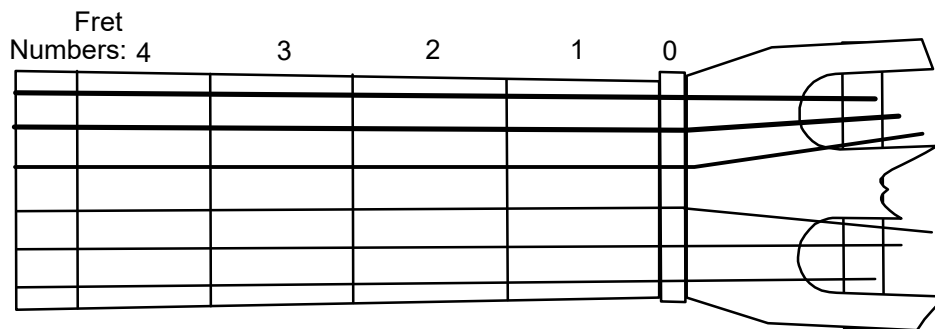
**Nut**-the white plastic thing at the top that holds the strings together.

**Frets**-the metal bars on the fretboard

**Strings**-each one has a letter name and a number.



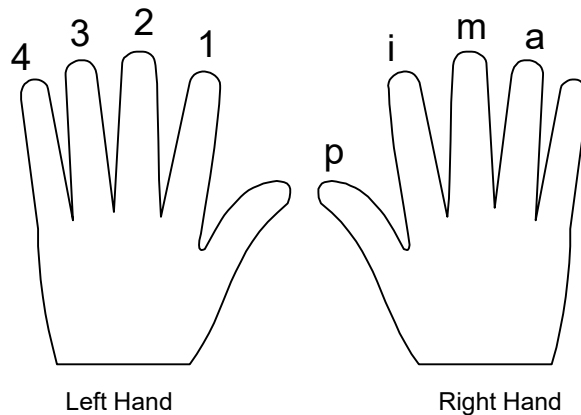
## Fret Numbers



## Finger Labels

### Remember the finger names and numbers

The left hand gets numbers and the right hand gets letters.



## Tablature

Reading tablature shows which strings and frets to play.

String Numbers

1e 0 1 2  
2B **T** 0 1 2  
3G 0 1 2  
4D **A**  
5A **B**  
6E

The lines are the strings and they are labeled 1, 2, 3, 4, 5 and 6. They are called e, B, G, D, A, and E too.

The numbers on the strings are the frets to play. A zero means just play the string with no fret.

A one, two or other number tells the fret to play on the string.

## First Tablature Practice

Play this using your P, I, M, A fingers on the correct strings.

String Numbers

1e 0  
2B **T** 0 0 0  
3G 0 0  
4D **A**  
5A **B**  
6E 0

P I M A M I



## Fourth Tablature Practice: Romance Theme

Count each measure 1-2-3.

Try to use P,I,M,A fingers.

The numbers on the strings mean which fret to press. If there is a "0" it means open string (no finger).

a m i

7 0 0 | 7 0 0 | 7 0 0 | 5 0 0 | 3 0 0 | 2 0 0

3 4

p

0 0 0 | 2 0 0 | 3 0 0 | 5 0 0 | 12 0 0

12 0 0 | 12 0 0 | 10 0 0 | 8 0 0 | 7 0 0

5 0 5 | 5 0 5 | 5 0 5 | 7 0 0 | 2 0 2

3 0 3 | 2 0 2 | 0 0 0 | 0 0 2 | 0 0 0